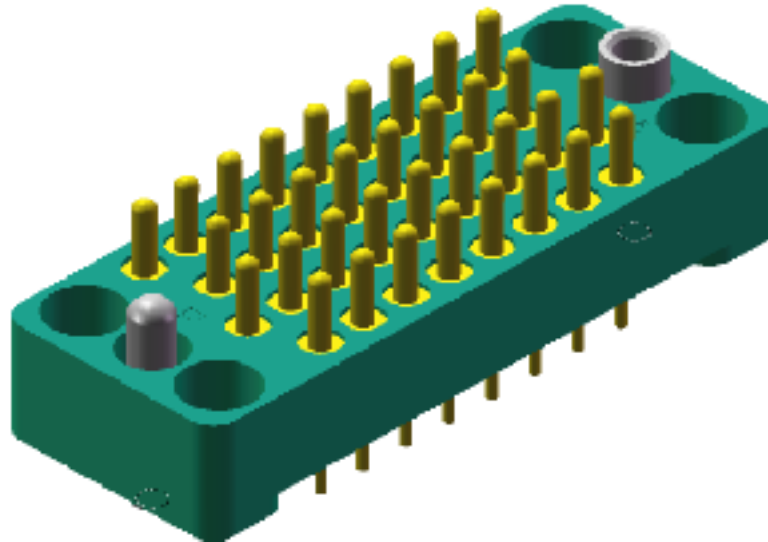


Boardmount Connectors OM Series



OM Series

Ossi Connectors has expanded the product portfolio by introducing the OM Series. This series of connectors are available with 9, 18 and 34 contacts. Connector insulator manufactured from glass filled polyetersulfone and contacts are made of high conductive copper alloy with Au over Ni plating. The mounting hardware is polarised to prevent mismatching.

Contact us for samples and further documentation.